

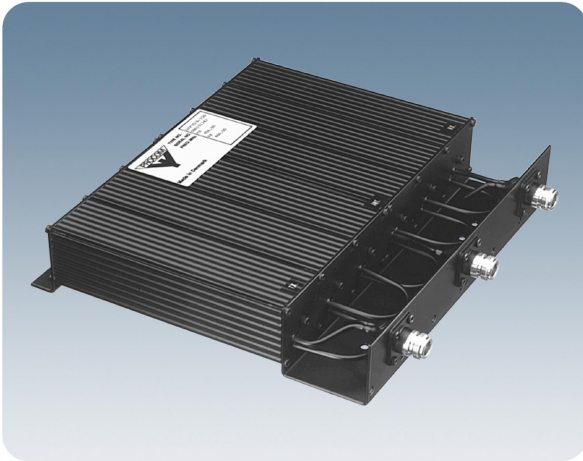
# DPF 70/6-150...

## 6-Cavity base station duplexers for the 450 MHz band

### DESCRIPTION

- 150 W base station duplexers.
- Both the  $\frac{1}{4} \lambda$  models and the  $\frac{3}{4} \lambda$  models are continuously tunable from 406 to 470 MHz.
- Low insertion loss due to silver-plated, temperature compensated resonator elements in high-Q 40 x 40 mm cavities.
- Multi-channel tuning possible with slightly reduced data (factory tuning recommended).
- Fully environmentally tested.

DPF 70/6-150 cavity type  $\frac{1}{4} \lambda$



DPF 70/6-150 cavity type  $\frac{3}{4} \lambda$



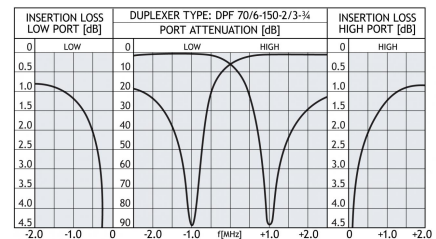
### ORDERING DESIGNATIONS

| TYPE                            | PRODUCT NO. | CAVITY TYPE           | DUPLEX SPACING (MHZ) |
|---------------------------------|-------------|-----------------------|----------------------|
| DPF 70/6-150-2/3                | 200000369   | $\frac{1}{4} \lambda$ | 2 - 3                |
| DPF 70/6-150-3/5                | 200001617   | $\frac{1}{4} \lambda$ | 3 - 5                |
| DPF 70/6-150-5/7                | 200001610   | $\frac{1}{4} \lambda$ | 5 - 7                |
| DPF 70/6-150-7/9                | 200001615   | $\frac{1}{4} \lambda$ | 7 - 9                |
| DPF 70/6-150-9/11               | 200001612   | $\frac{1}{4} \lambda$ | 9 - 11               |
| DPF 70/6-150-11/13              | 200001872   | $\frac{1}{4} \lambda$ | 11 - 13              |
| DPF 70/6-150-13/15              | 200001873   | $\frac{1}{4} \lambda$ | 13 - 15              |
| DPF 70/6-150-2/3- $\frac{3}{4}$ | 200001689   | $\frac{3}{4} \lambda$ | 2 - 3                |
| DPF 70/6-150-3/5- $\frac{3}{4}$ | 200002062   | $\frac{3}{4} \lambda$ | 3 - 5                |

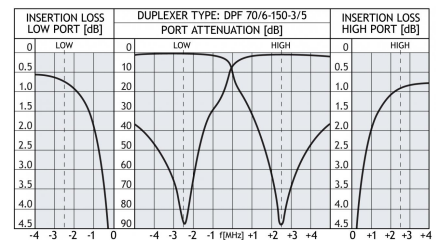
### SPECIFICATIONS

| ELECTRICAL                             |                                 |                       |                       |                             |
|--|---------------------------------|-----------------------|-----------------------|-----------------------------|
| MODEL                                  | DPF 70/6-150-2/3- $\frac{3}{4}$ |                       | DPF 70/6-150-3/5      |                             |
| CAVITY TYPE                            | $\frac{3}{4} \lambda$           |                       | $\frac{1}{4} \lambda$ |                             |
| TX/RX FREQUENCY                        | 406 - 470 MHz                   |                       |                       |                             |
| MAX. INPUT POWER                       | 150 W                           |                       |                       |                             |
| TUNING                                 | Single-channel tuned.           | Single-channel tuned. | Single-channel tuned. | Multi-channel tuned.        |
|  | Spacing = 2 MHz                 | Spacing = 3.5 MHz     | Spacing = 5 MHz       | Spacing = 5 MHz             |
|  | 100 W                           | 100 W                 | 150 W                 | Port width = 2 MHz<br>100 W |
| INSERTION LOSS TX - ANT. AND ANT. - RX | ≤ 1.4 dB                        | ≤ 1.3 dB              | ≤ 1.2 dB              | ≤ 1.4 dB                    |
| TX NOISE SUPPRESSION ON RX-FREQ.       | > 70 dB                         | > 80 dB               | > 80 dB               | > 60 dB                     |
| RX ISOLATION ON TX-FREQUENCY           | > 70 dB                         | > 80 dB               | > 80 dB               | > 60 dB                     |
| DUPLEX SPACING                         | 2 - 3 MHz                       |                       | 3 - 5 MHz             |                             |
| IMPEDANCE                              | Nom. 50 $\Omega$                |                       |                       |                             |
| SWR                                    | ≤ 1.5                           | ≤ 1.5                 | ≤ 1.5                 | ≤ 1.5                       |
| MECHANICAL                             |                                 |                       |                       |                             |
| TEMP. RANGE                            | -30° C → +60° C                 |                       |                       |                             |
| FREQ. STABILITY                        | Approx. 4.5 ppm/° C             |                       |                       |                             |
| CONNECTOR TYPE                         | N-female                        |                       |                       |                             |
| COLOUR                                 | Black                           |                       |                       |                             |
| DIMENSIONS (L x W x H)                 | 585 x 250 x 50 mm               |                       | 260 x 250 x 50 mm     |                             |
| WEIGHT                                 | Approx. 4.6 kg                  |                       | Approx. 2.5 kg        |                             |

### TYPICAL RESPONSE CURVES



### TYPICAL RESPONSE CURVES



PROCOM A/S reserve the right to amend specifications without prior notice.

18/12/14